



Shut-off valve Standard white series

V1000-W/V3000-W Series



1 action exhaust operation Prevent accidents caused by residual pressure.

Port size: 1/8 to 1/2

JIS symbol

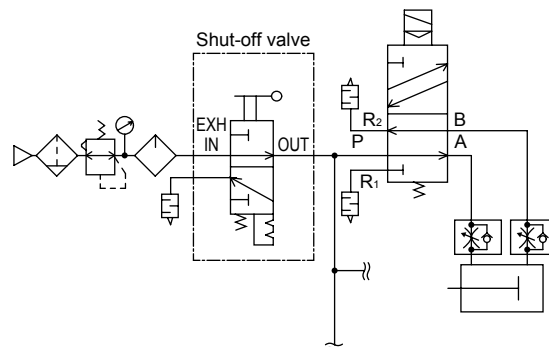


Specifications

Descriptions		V1000-W		V3000-W		
Exterior						
Descriptions		V1000-6-W	V1000-8-W	V3000-8-W	V3000-10-W	V3000-15-W
Working fluid		Compressed air				
Max. working pressure MPa		1.0				
Withstanding pressure MPa		1.5				
Fluid temperature °C		5 to 60				
Operation lever switching angle		90°				
Operating force	Pushing force N	18		80		
	Torque N·m	0.5		2		
Valve section leakage ℓ/min (ANR)		10				
External leakage ℓ/min (ANR)		10				
Port size (Rc, NPT, G)	IN·OUT	1/8	1/4	1/4	3/8	1/2
	EXH	1/8		3/8		
Product weight kg		0.17		0.25		
Effective sectional area (mm ²)	IN·OUT	15	18	40	70	85
	OUT·EXH	5		40	50	50

Applications

Explanation: When a solenoid valve and an air cylinder, etc. are repaired and adjusted, to ensure the safety, exhaust compressed air in the pneumatic circuit with a shut-off valve before starting work.



How to order

- For FRL 1000 Series

V1000 - **6** - **W** - **A6W**
(White type)

- For FRL 3000, 4000 Series

V3000 - **8** - **W** - **A6W**
(White type)

A Model no.

B Port size

C Port thread type

D Option

E Displayed unit

F Attachment

A Model no.

V	V
1	3
0	0
0	0
0	0

Symbol	Descriptions		
B Port size			
6	Rc1/8	●	
8	Rc1/4	●	●
10	Rc3/8		●
15	Rc1/2		●
C Port thread type			
Blank	Rc thread	●	●
N	NPT thread	●	●
G	G thread	●	●
D Option			
Blank	Standard flow (left to right)	●	●
X1	In/out reverse flow (right to left)	●	●
E Displayed unit			
Blank	MPa display, Rc thread	●	●
J1	MPa display, NPT, G thread	●	●
F Attachment			
		Note 1, Note 2	
Blank	No attachments	●	●
A6*W	1/8 piping adaptor set	●	
A8*W	1/4 piping adaptor set	●	●
A10*W	3/8 piping adaptor set	●	●
A15*W	1/2 piping adaptor set		●
A20*W	3/4 piping adaptor set		●
BW	C type bracket	●	●
S	Silencer	●	●
* Adaptor thread type			
Blank	Rc thread	●	●
N	NPT thread	●	●
G	G thread	●	●

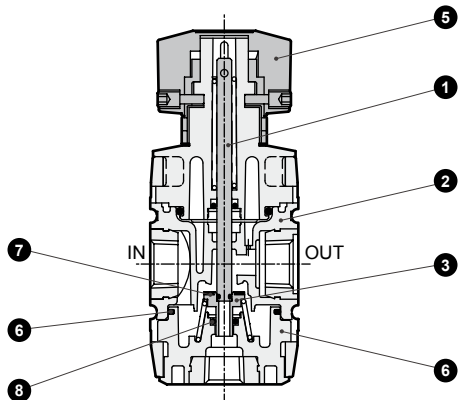
⚠ Cautions for model No. selection

Note 1: The piping adapter set and C bracket cannot be used together.
Note 2: A joiner set is attached with the piping adapter set.

⚠ Select the reverse regulator (R*100-W) or reverse filter regulator (W*100-W) when installing the V*000-W onto the primary side of the regulator or filter regulator.

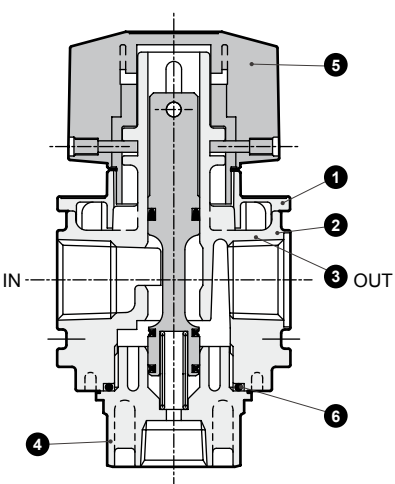
Internal structure and parts list

● V1000-W



No.	Part name	Material
1	Spool	Steel
2	Body assembly	Polyamide resin, steel
3	Valve element	Brass, nitrile rubber
4	Bottom plug	Polyamide resin, steel
5	Knob	Polyacetal resin
6	Packing	Nitrile rubber
7	O-ring	Nitrile rubber
8	O-ring	Nitrile rubber

● V3000-W



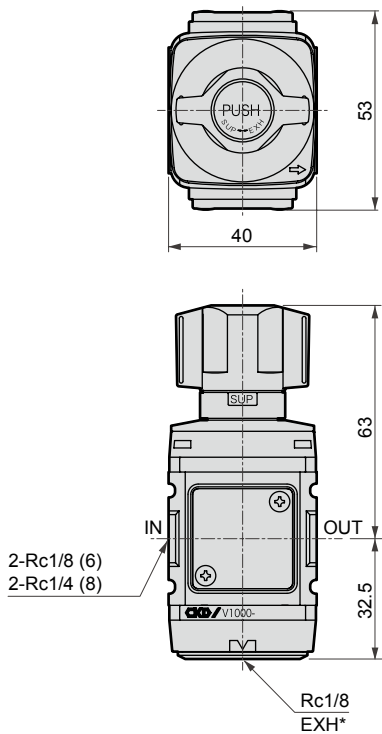
No.	Part name	Material
1	Plate cover	ABS resin
2	Body	Aluminum alloy die-casting
3	Spool assembly	Aluminum alloy urethane resin
4	Bottom plug	PBT resin Note 1
5	Knob	Polyacetal resin
6	O-ring	Nitrile rubber

Note 1: The metal bottom plug is used as a custom-order part.

Dimensions

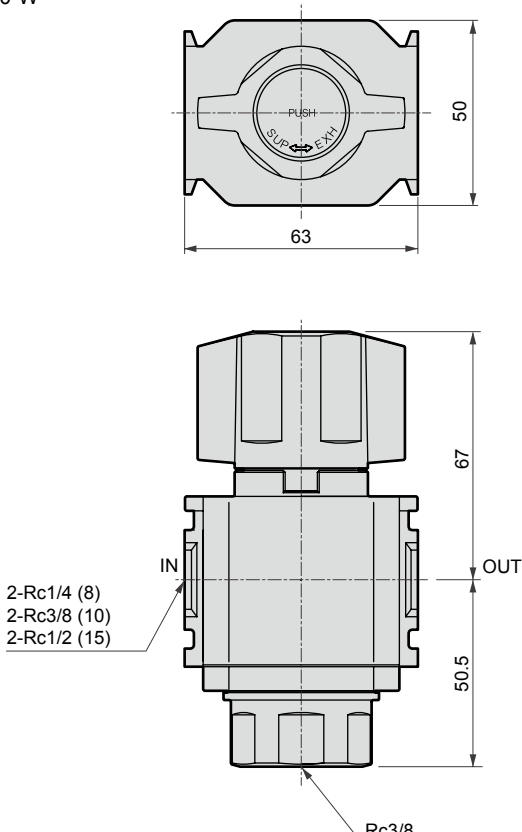


● V1000-W



* The EXH port is dedicated for installation of the silencer.

● V3000-W



* The EXH port is dedicated for installation of the silencer.