

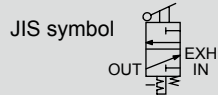


Lockout valve (OSHA compliant) Standard white series

V3010-W/V6010-W Series

Prevent accidents caused by residual pressure.

Port size: 1/4 to 1



Specifications

| Descriptions | | V3010-8-W | V3010-10-W | V3010-15-W | V6010-20-W | V6010-25-W |
|---|------------------|----------------|------------|------------|------------|------------|
| Working fluid | | Compressed air | | | | |
| Max. working pressure MPa | | 1 | | | | |
| Withstanding pressure MPa | | 1.5 | | | | |
| Fluid temperature °C | | 5 to 60 | | | | |
| Operation lever switching angle | | 90° | | | | |
| Operating force | Pushing force N | 80 or less | | | | |
| | Torque N·m | 2.5 or less | | | | |
| Valve seat leakage cm ³ /min (ANR) | | 10 or less | | | | |
| External leakage cm ³ /min (ANR) | | 10 or less | | | | |
| Port size | IN-OUT | 1/4 | 3/8 | 1/2 | Rc 3/4 | Rc1 |
| | (Rc, NPT, G) EXH | | | | Rc1/2 | |
| Product weight kg | | 0.3 | | | 0.8 | |
| Effective sectional area(mm ²) | IN→OUT | 40 | 70 | 85 | 145 | 150 |
| | OUT→EXH | 40 | 50 | 50 | 105 | 110 |

OSHA (Occupational Safety and Health Administration)

Standards for worker safety set by the United States.

<Lockout-Tagout>

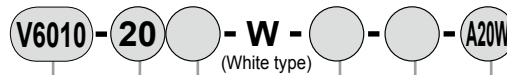
When servicing or maintaining machinery, the air source shall be closed with a shut-off valve (lockout valve), and residual pressure shall be discharged. If a third party inadvertently operates the valve during such operation and compressed air is applied, the cylinder, etc., could move suddenly and injure personnel. This standard states that, "All valves used for such purposes shall have a key or a structure which can be locked with a key."

How to order

- FRL 2000, 4000 Series



- For FRL 6000, 8000 Series



A Model no.

B Port size

C Port thread type

D Option

E Displayed unit

F Attachment

⚠ Cautions for model No. selection

Note 1: The piping adapter set and C bracket cannot be used together.

Note 2: A joiner set is attached with the piping adapter set.

⚠ Select the reverse regulator (R*100-W) or reverse filter regulator (W*100-W) when installing the V*010-W onto the primary side of the regulator or filter regulator.

Specification for LiB production

(Catalog No. CC-947)

- Design applicable for LiB manufacturing process

V3010 - - P4*

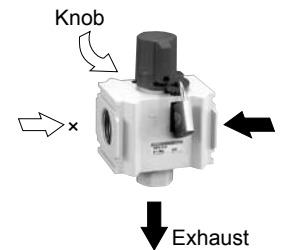
How to use

- Regular use



- Maintenance work

It can be locked at the position where residual pressure is released.



A Model no.

| V | V |
|---|---|
| 3 | 6 |
| 0 | 0 |
| 1 | 1 |
| 0 | 0 |

| Symbol | Descriptions | | |
|--------------------|--------------|---|---|
| B Port size | | | |
| 8 | 1/4 | ● | |
| 10 | 3/8 | ● | |
| 15 | 1/2 | ● | |
| 20 | 3/4 | | ● |
| 25 | 1 | | ● |

| C Port thread type | | | |
|---------------------------|------------|---|---|
| Blank | Rc thread | ● | ● |
| N | NPT thread | ● | ● |
| G | G thread | ● | ● |

| D Option | | | |
|-----------------|-------------------------------------|---|---|
| Blank | None | ● | ● |
| X1 | IN/out reverse flow (right to left) | ● | ● |

| E Displayed unit | | | |
|-------------------------|----------------------------|---|---|
| Blank | MPa display, Rc thread | ● | ● |
| J1 | MPa display, NPT, G thread | ● | ● |

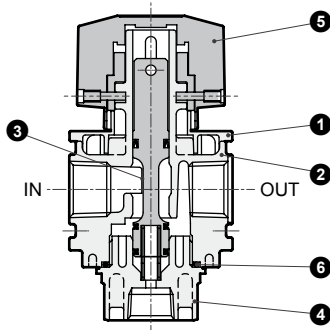
| F Attachment | | | |
|---------------------|--------------------------|---|---|
| Blank | No attachments | ● | ● |
| A8W | 1/4 piping adaptor set | ● | |
| A10W | 3/8 piping adaptor set | ● | |
| A15W | 1/2 piping adaptor set | ● | |
| A20W | 3/4 piping adaptor set | ● | ● |
| A25W | 1 piping adaptor set | ● | ● |
| A32W | 1 1/4 piping adaptor set | | ● |
| BW | C type bracket | ● | ● |
| S | Silencer | ● | ● |

| * Adaptor thread type | | | |
|------------------------------|------------|---|---|
| Blank | Rc thread | ● | ● |
| N | NPT thread | ● | ● |
| G | G thread | ● | ● |

V*010-W Series

Internal structure and parts list

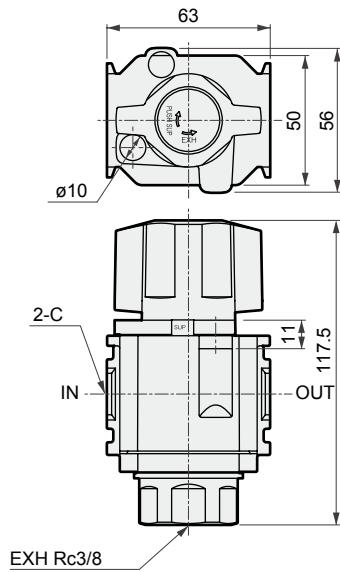
● V3010-W



| No. | Part name | Material |
|-----|----------------|-------------------------------|
| 1 | Plate cover | ABS Resin (Note 2) |
| 2 | Body | Aluminum alloy die-casting |
| 3 | Spool assembly | Aluminum alloy urethane resin |
| 4 | Bottom plug | PBT Resin (Note 1) (Note 2) |
| 5 | Knob | Aluminum alloy die-casting |
| 6 | O-ring | Nitrile rubber |

Note 1: The metal bottom plug is used as a custom-order part.
 Note 2: Flame resistant resin UL94 standard equivalent

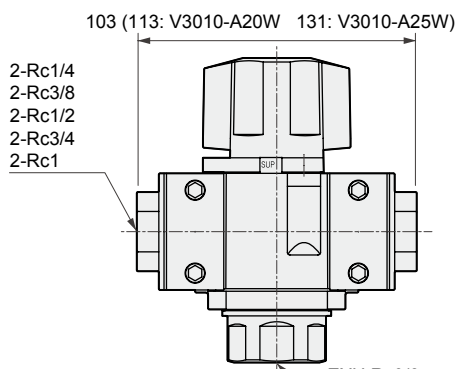
Dimensions (V3010-W)



* The EXH port is dedicated for installation of the silencer.

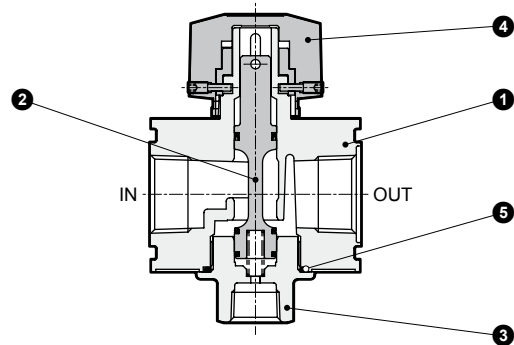
| Descriptions | C |
|--------------|-------|
| V3010-8-W | Rc1/4 |
| V3010-10-W | Rc3/8 |
| V3010-15-W | Rc1/2 |

● Adaptor attachment



Piping adaptor set will not be installed upon shipment.

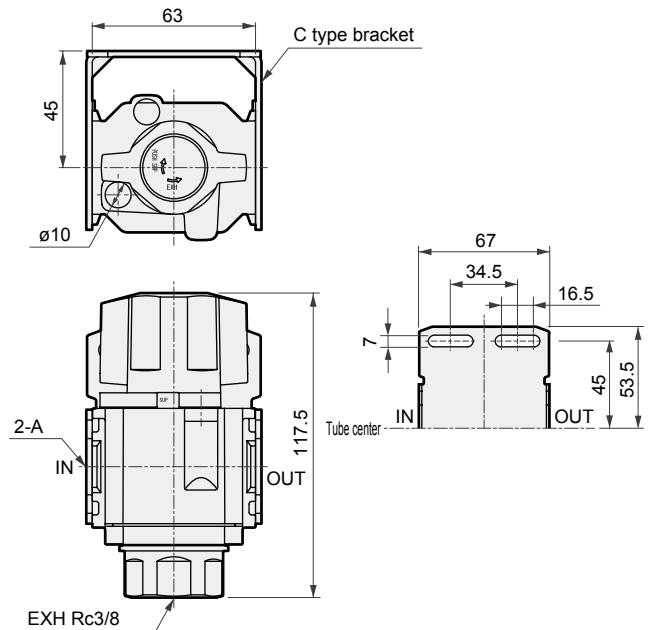
● V6010-W



| No. | Part name | Material |
|-----|----------------|---|
| 1 | Body | Aluminum alloy die-casting |
| 2 | Spool assembly | Aluminum alloy, hydrogenated nitrile rubber |
| 3 | Bottom plug | Aluminum alloy die-casting |
| 4 | Knob | Aluminum alloy die-casting |
| 5 | O-ring | Nitrile rubber |

● C type bracket (-BW)

Part no: B320

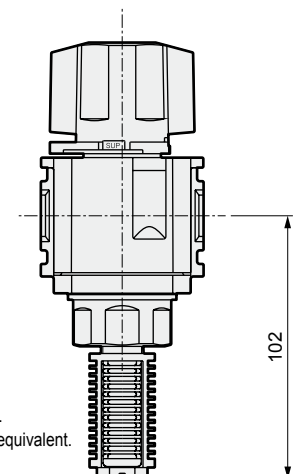


The C type bracket is attached at shipment.

C type bracket and piping adapter set can not be used together.

● Silencer (-S)

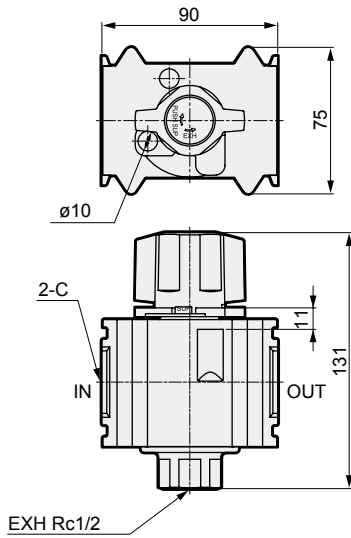
Part no: SLW-10A



Silencer will not be installed upon shipment.

Silencer is flame resistant resin UL94 standard V-0 equivalent. However, element is not flame resistant.

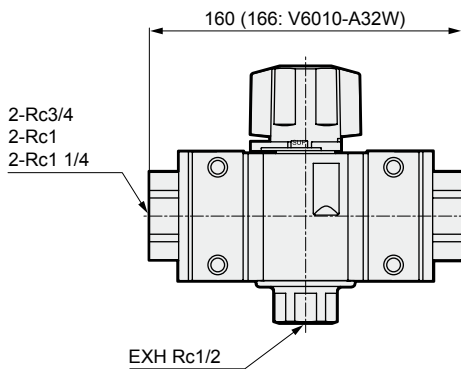
Dimensions (V6010-W)



* The EXH port is dedicated for installation of the silencer.

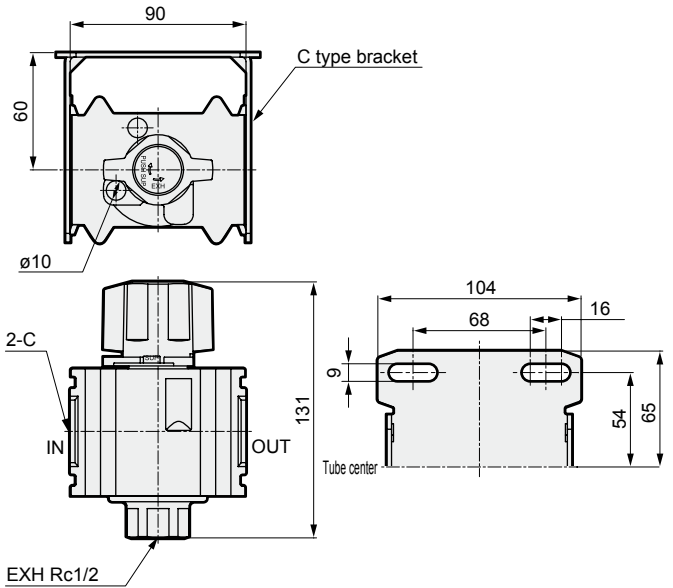
| Descriptions | C |
|--------------|-------|
| V6010-20-W | Rc3/4 |
| V6010-25-W | Rc1 |

● Adaptor attachment



Piping adaptor set will not be installed upon shipment.

● C type bracket (-BW) Part no: B620

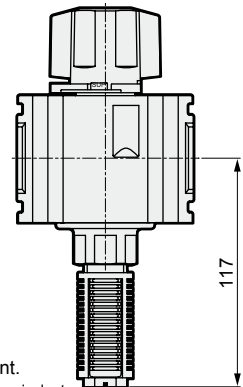


The C type bracket is attached at shipment.

C type bracket and piping adapter set can not be used together.

● Silencer (-S)

Part no.: SLW-15A

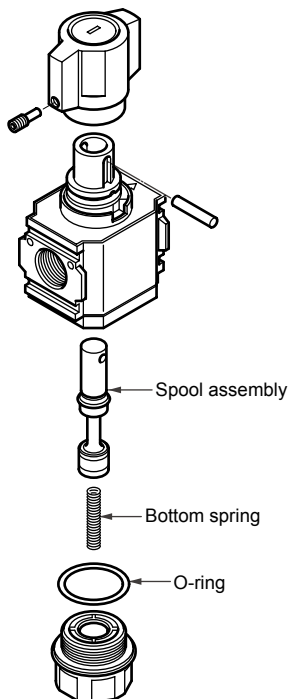


Silencer will not be installed upon shipment.

Silencer is flame resistant resin UL94 standard V-0 equivalent.

However, element is not flame resistant.

Shut off valve (V3000-W, V3010-W) optional parts drawing



Spool assembly

(Spool assembly and bottom spring set)

| Model | Spool assembly model no. |
|--------------|--------------------------|
| V3000, V3010 | V3000-SPOOL |